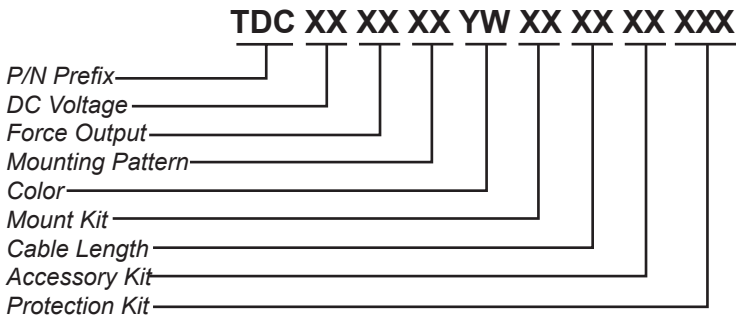


Cougar® DC Truck Vibrators



NOMENCLATURE



FEATURES

- Up to 3200 pounds of vibratory force to improve the unloading of wet, sticky, fibrous or even frozen material.
- Small, lightweight units require minimal space.
- Weather-proof aluminum housing provides high output to weight ratio.
- Sealed ball bearings eliminate lubrication requirements.
- Supplied with mounting hardware and electrical connections

Specify Cougar for:

- Cost effective solutions
- Expert technical assistance
- Complete service and support

DC VOLTAGE

- 12:** 12 Volt
- 24:** 24 Volt

FORCE OUTPUT

- 11:** 1100 Lbs
- 16:** 1600 Lbs
- 25:** 2500 Lbs
- 27:** 2700 Lbs
- 32:** 3200 Lbs

MOUNTING PATTERN

- 4M:** Rectangular Pattern
2.00" x 8.00"
- 2V:** In-line Pattern
8.50" Between Center
- 2M:** In-line Pattern
8.00" Between Center

MOUNT KIT

- MO:** No Mount Kit
- MA:** Aluminum Mount Plate
- MS:** Steel Mount Plate
- MB:** Hardware Only

CABLE LENGTH

- CO:** No Cord
- 25:** 25 ft
- 40:** 40 ft
- 70:** 70 ft













ACCESSORY KIT

- AO:** No Accessory Kit
- 06:** #6 Kit

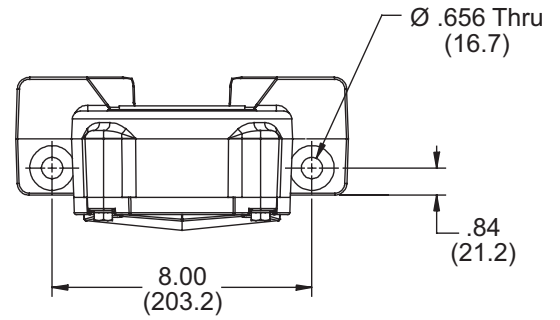
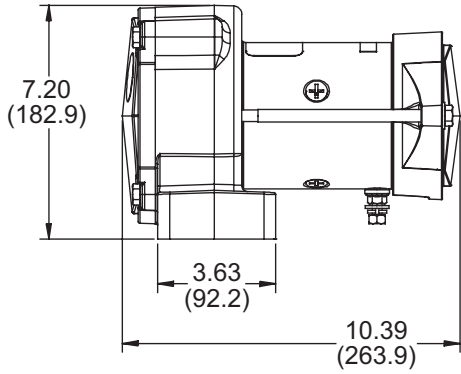
PROTECTION KIT

- PRO:** No Protection Kit
- 1CO:** 2-Year Warranty
(circuit breaker)
- 3CT:** 3-Year Warranty
(circuit breaker and timer)

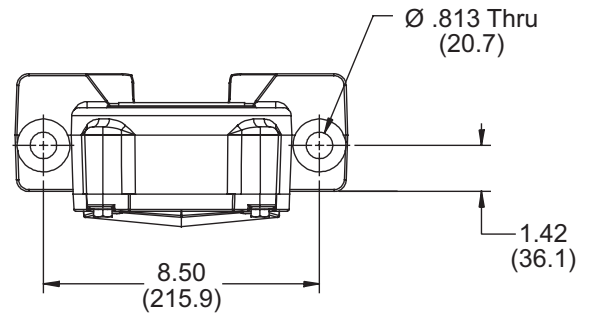
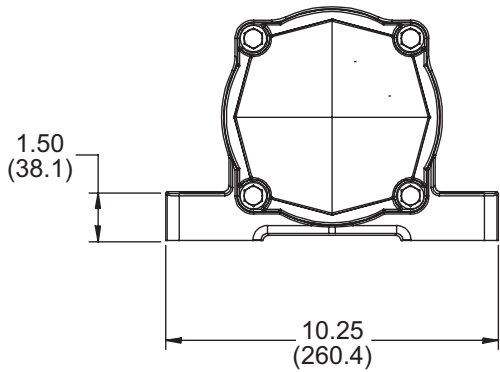
Cougar® DC Truck Vibrators

Vehicle Body Style	Body Capacity (yd ³)	Body Length (ft)	Power Source/Vibrator
Rear Dump, Tandem, TriAxel, QuadAxel 	8-16	10+	12VMDC (MDC-700) 24VMDC (MDC-700) 12VDC (DC-3200) 24VDC (DC-3200) HYDRAULIC (THD-2500)
Rear Dump 	5-10	9	12VDC (DC-2500) 24VDC (DC-2500) HYDRAULIC (THD-2500)
Rear Dump 	2-5	8	12VDC (DC-1600) 24VDC (DC-1600) HYDRAULIC (THD-1600)
Vacuum Truck 	N/A	N/A	12VDC (DC-3200) 24VDC (DC-3200) HYDRAULIC (THD-1600)
Spreader, Tailgate, Hitch ATV 	1	N/A	12VSDC (SDC0100) (ATV) 12VSDC (SDC-200) All Others
Spreader Body/V-Box 	7-10	10-15	12VMDC (MDC-700) 24VMDC (MDC-700) 12VDC (DC-2500) 24VDC (DC-2500) HYDRAULIC (THD-1600)
Volumetric Mixer *Aggregate/Cement Hopper 	N/A	N/A	12VMDC (MDC-400) 24VMDC (MDC-400) AIR PISTON (AP5-200) AIR ROTARY (ATU-42)
Concrete Pumps/Chutes 	N/A	N/A	12VMDC (MDC-400) 24VMDC (MDC-400)
Concrete Barrel Truck *Charge & Discharge Chute 	N/A	N/A	12VSDC (SDC-100) 12VSDC (SDC-200) AIR ROTARY (ATU-42)
Hopper Bottom/Grain Trailer 	15-30	15-40	AIR PISTON (AP5-200) <i>One per hopper</i>
Bulk Feed 	15-30	15-40	12VDC (DC-3200) 24VDC (DC-3200) HYDRAULIC (THD-2500)
Tandems/Live Bottoms/Multi Axels to 40' 	15-30	15-40	12VDC (DC-3200) 24VDC (DC-3200) HYDRAULICK (THD-2500)

TECHNICAL DATA SHEET



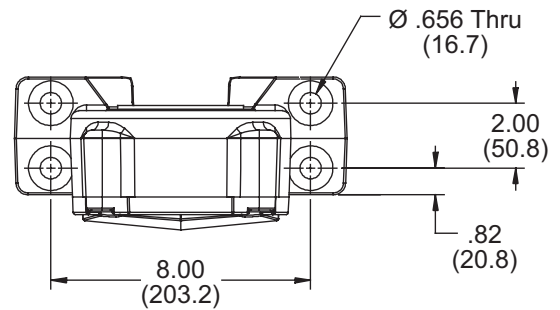
TDCXX-XXXX-2M



TDCXX-XXXX-2V

PERFORMANCE DATA

Model	Volts	Average Amps	Max Force Lbs
TDC12-1100	12	45	1100
TDC12-1600	12	46	1600
TDC12-2500	12	46	2500
TDC12-2700	12	50	2700
TDC12-3200	12	53	3200
TDC24-1100	24	29	1100
TDC24-1600	24	30	1600
TDC24-2500	24	30	2500
TDC24-2700	24	33	2700
TDC24-3200	24	36	3200



TDCXX-XXXX-4M

Distributed By:



ChicagoVibratorProducts
Flow and Compaction
 Division of CVP Group
 800-842-7284 (P)
 866-247-7538 (F)
 Solutions@ChiVib.com
 www.ChicagoVibrator.com

COMPANY WITH
 QUALITY SYSTEM
 CERTIFIED BY DNV
 = ISO 9001:2008 =

COUGAR
 VIBRATION SOLUTIONS

Problem Solved™ GUARANTEED!

Form No. L4076-01/17
 © Martin Engineering Company 2017